



The LiSe and MESSAGE Projects



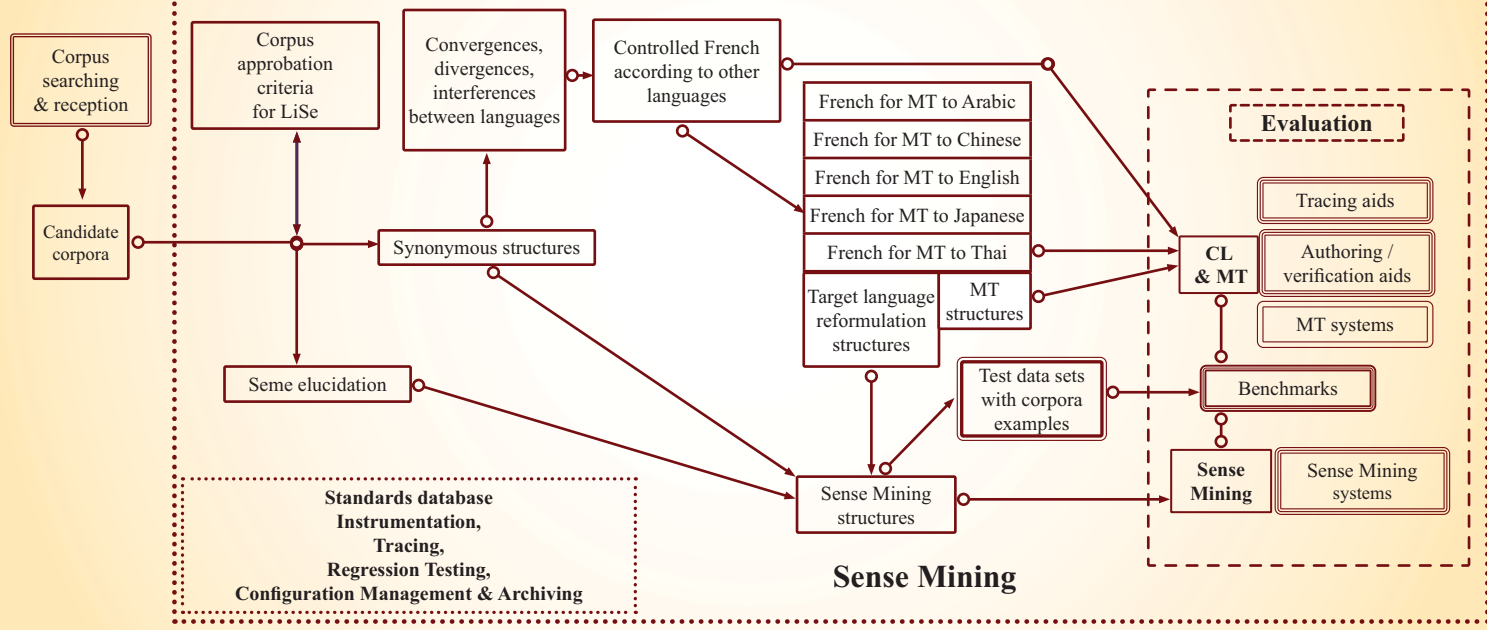
Gabriel Sekunda, Peter Greenfield and Sylviane Cardey

The LiSe project: Sense Mining, Controlled Languages and Machine Translation

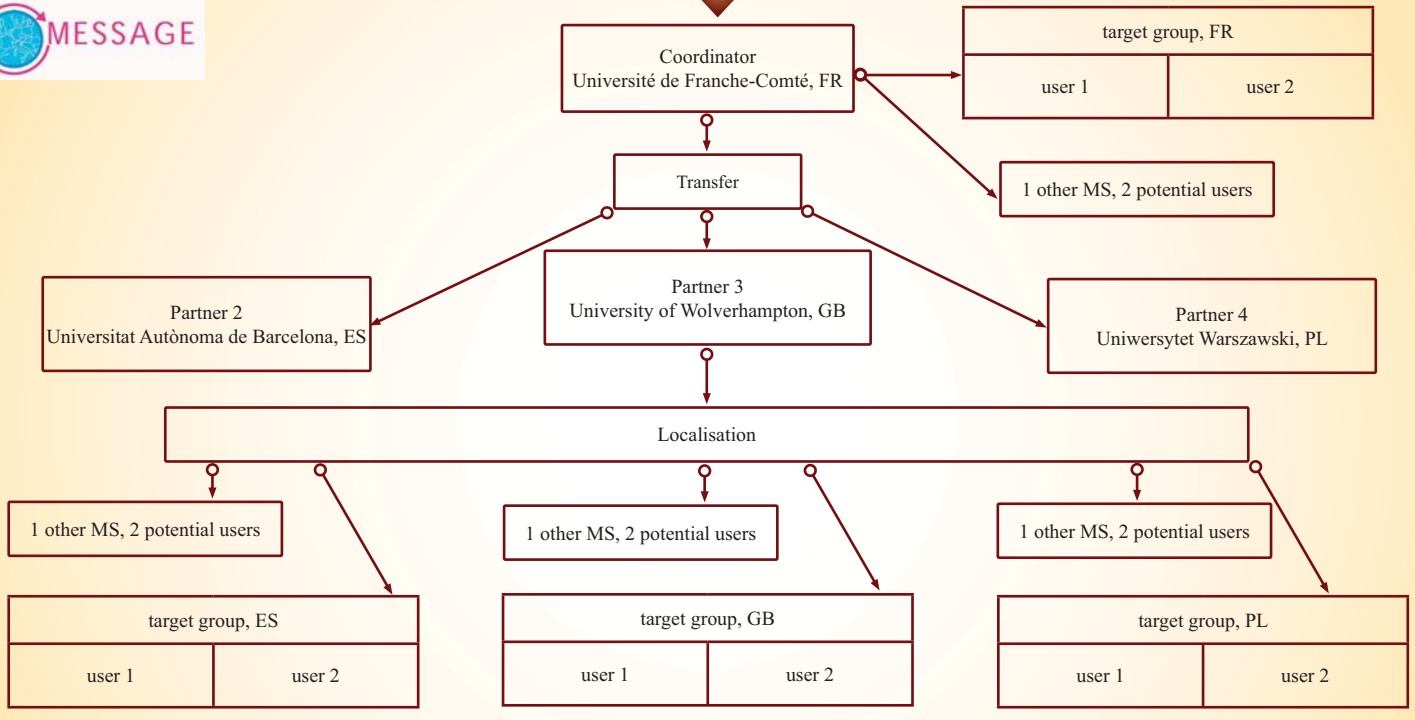


Project funded by the French National Research Agency (L'Agence nationale de la recherche), the ANR, programme: Concepts Systèmes et Outils pour la Sécurité Globale

Controlled Languages & Machine Translation



Controlled Language Technology Aids Good Translation Too



The MESSAGE project's transfer of the Controlled Language methodology from one language to another, one country (MS = European Member State) to another



With the support of the Prevention, Preparedness and Consequence Management of Terrorism and other Security-related Risks Programme European Commission - Directorate-General Justice, Freedom and Security